



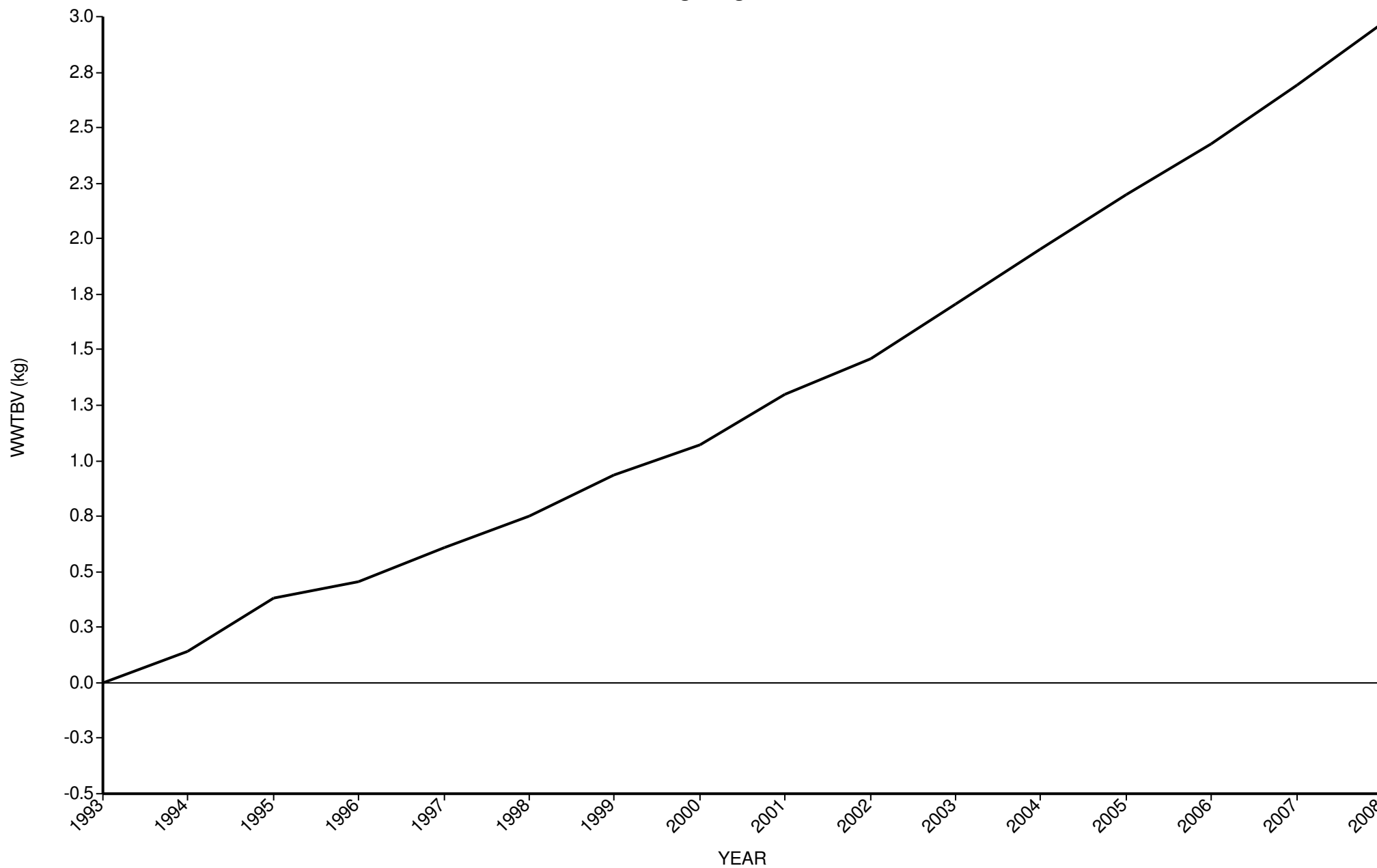
SIL Genetic Trends Graphs

for connected Flocks

GE Analysis #19124 5/8/2009

Analysis Flocks: 2,11,20,35 + 342 others

Weaning weight BV





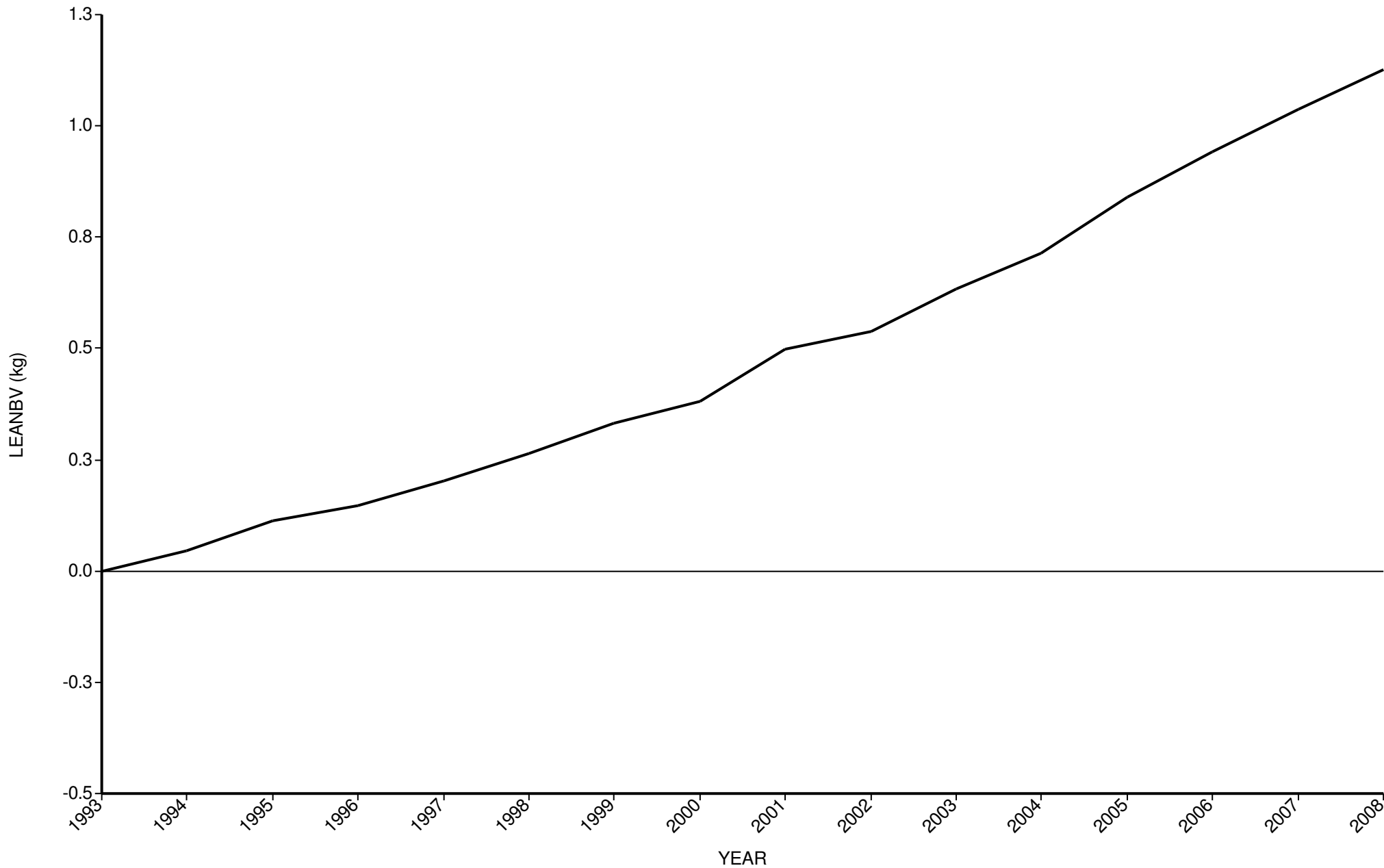
SIL Genetic Trends Graphs

for connected Flocks

GE Analysis #19124 5/8/2009

Analysis Flocks: 2,11,20,35 + 342 others

Lean weight BV





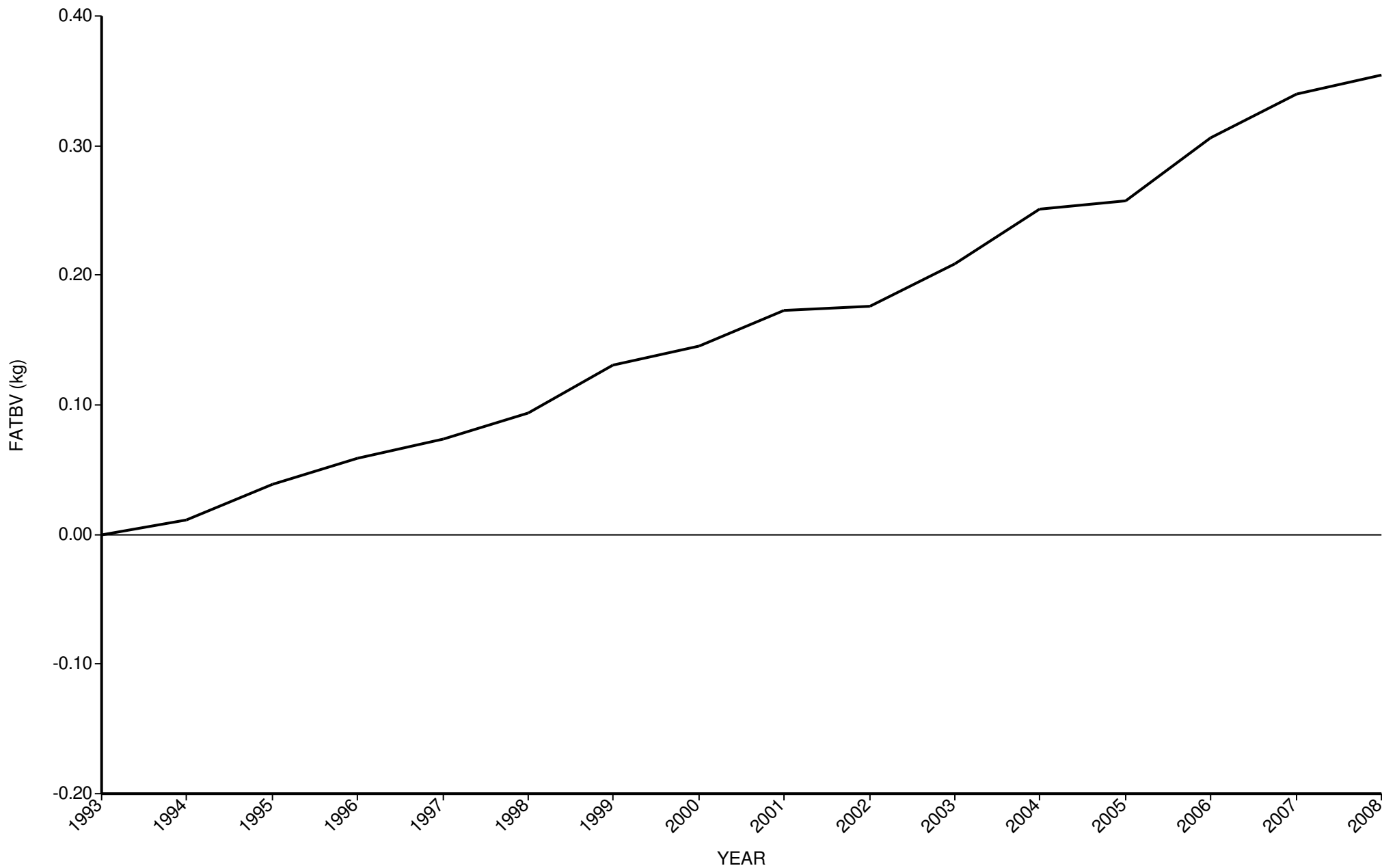
SIL Genetic Trends Graphs

for connected Flocks

GE Analysis #19124 5/8/2009

Analysis Flocks: 2,11,20,35 + 342 others

Fat weight BV





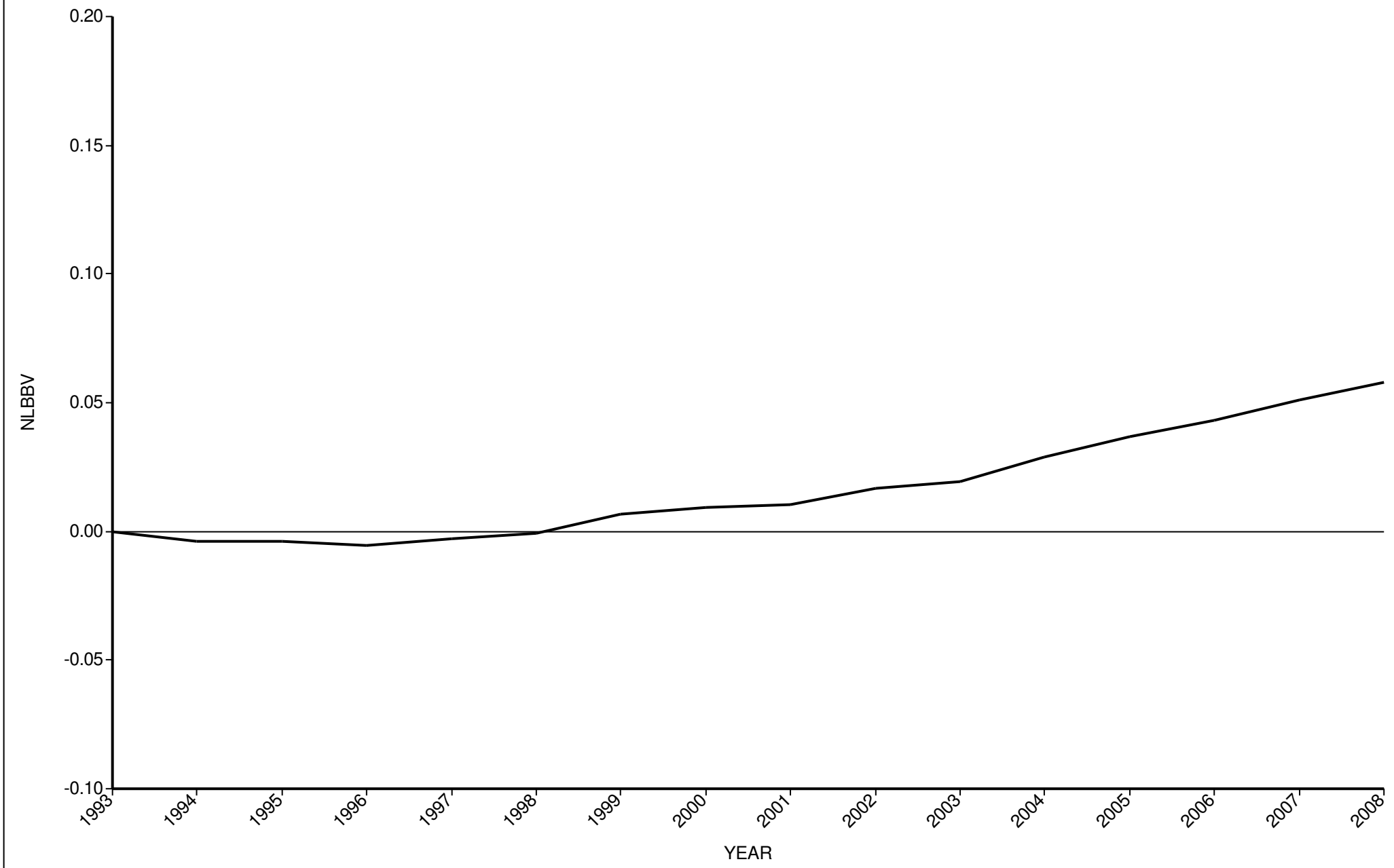
SIL Genetic Trends Graphs

for connected Flocks

GE Analysis #19124 5/8/2009

Analysis Flocks: 2,11,20,35 + 342 others

Number of lambs born BV





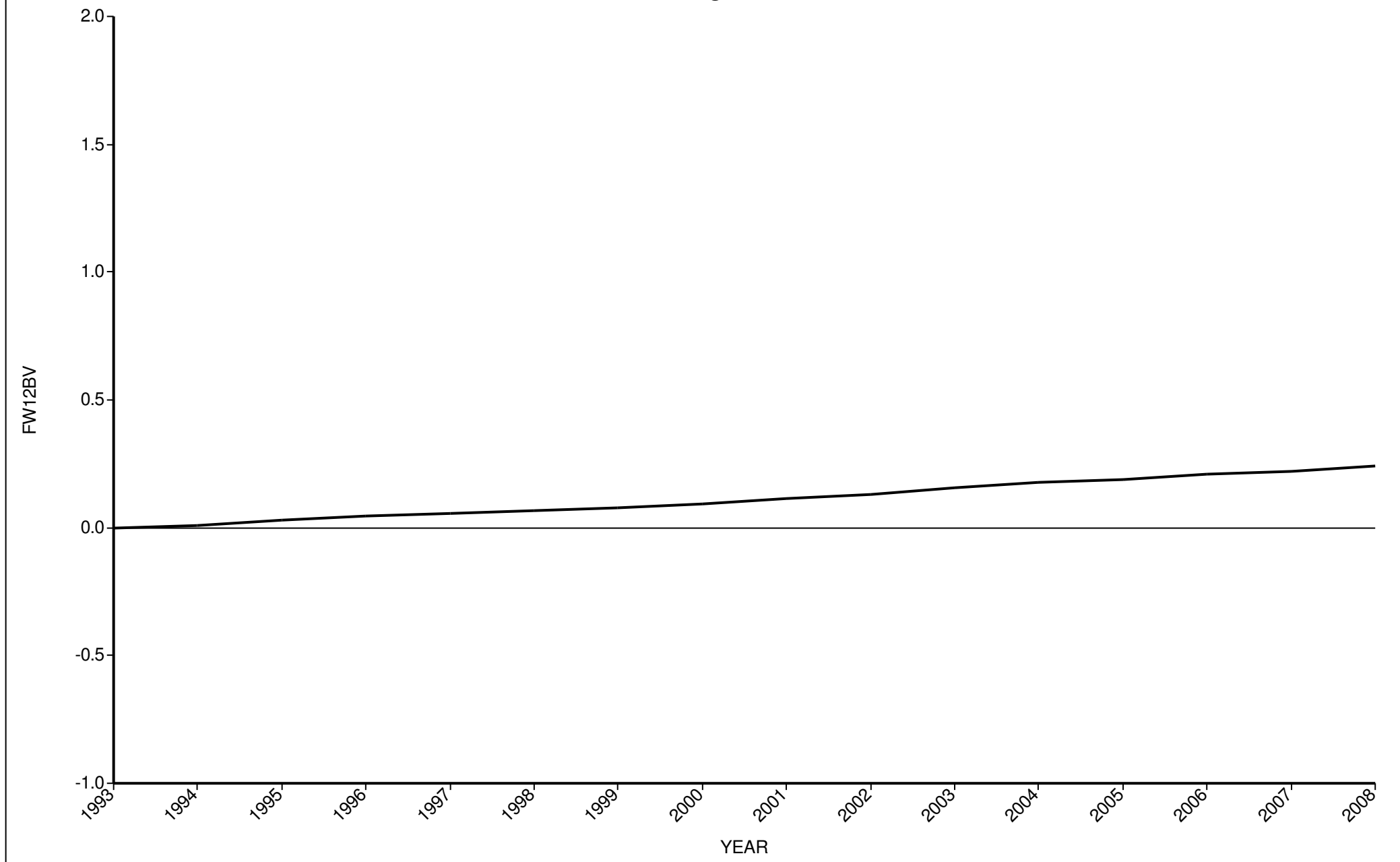
SIL Genetic Trends Graphs

for connected Flocks

GE Analysis #19124 5/8/2009

Analysis Flocks: 2,11,20,35 + 342 others

Fleece weight 12 BV



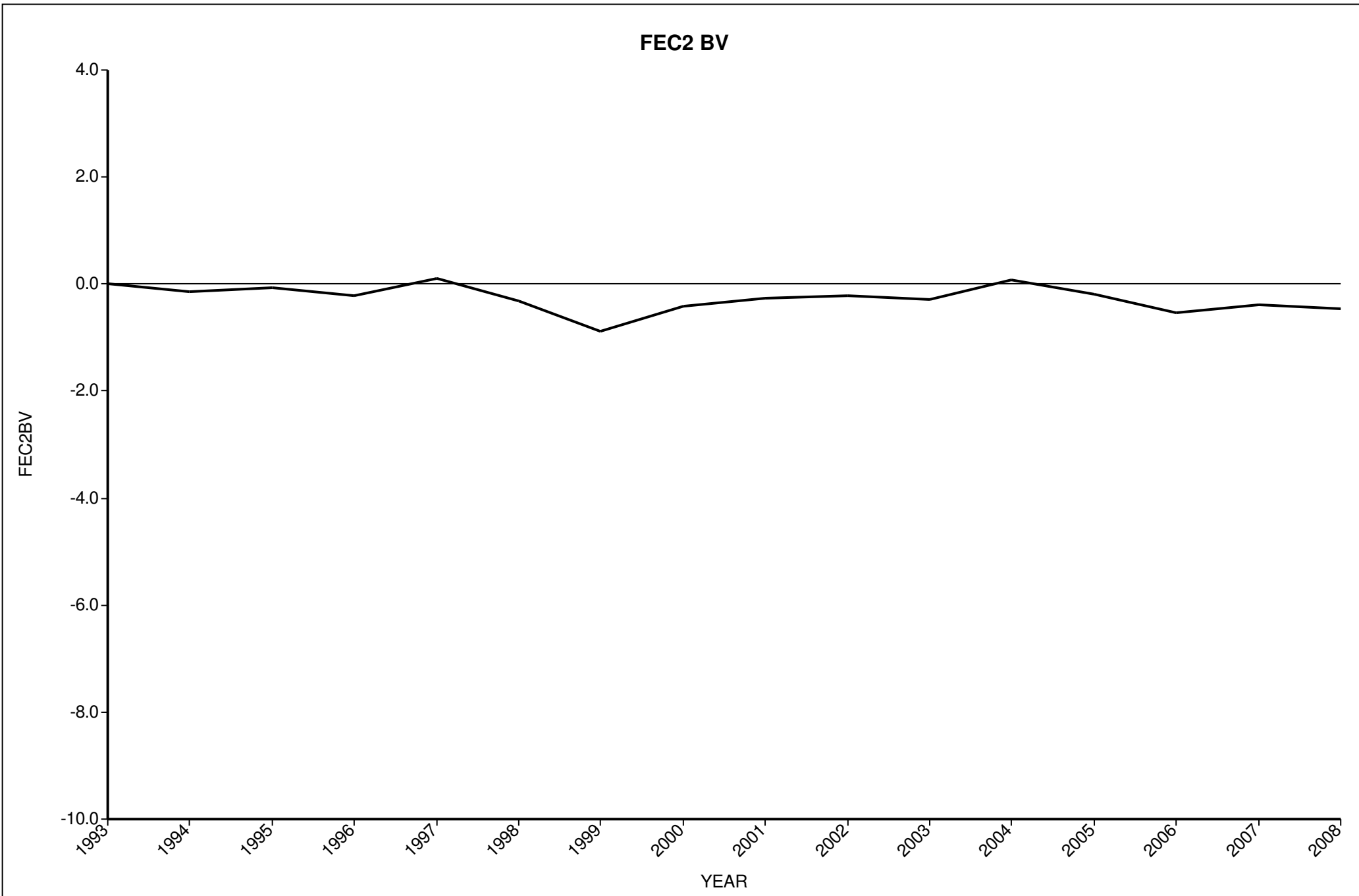


SIL Genetic Trends Graphs

for connected Flocks

GE Analysis #19124 5/8/2009

Analysis Flocks: 2,11,20,35 + 342 others





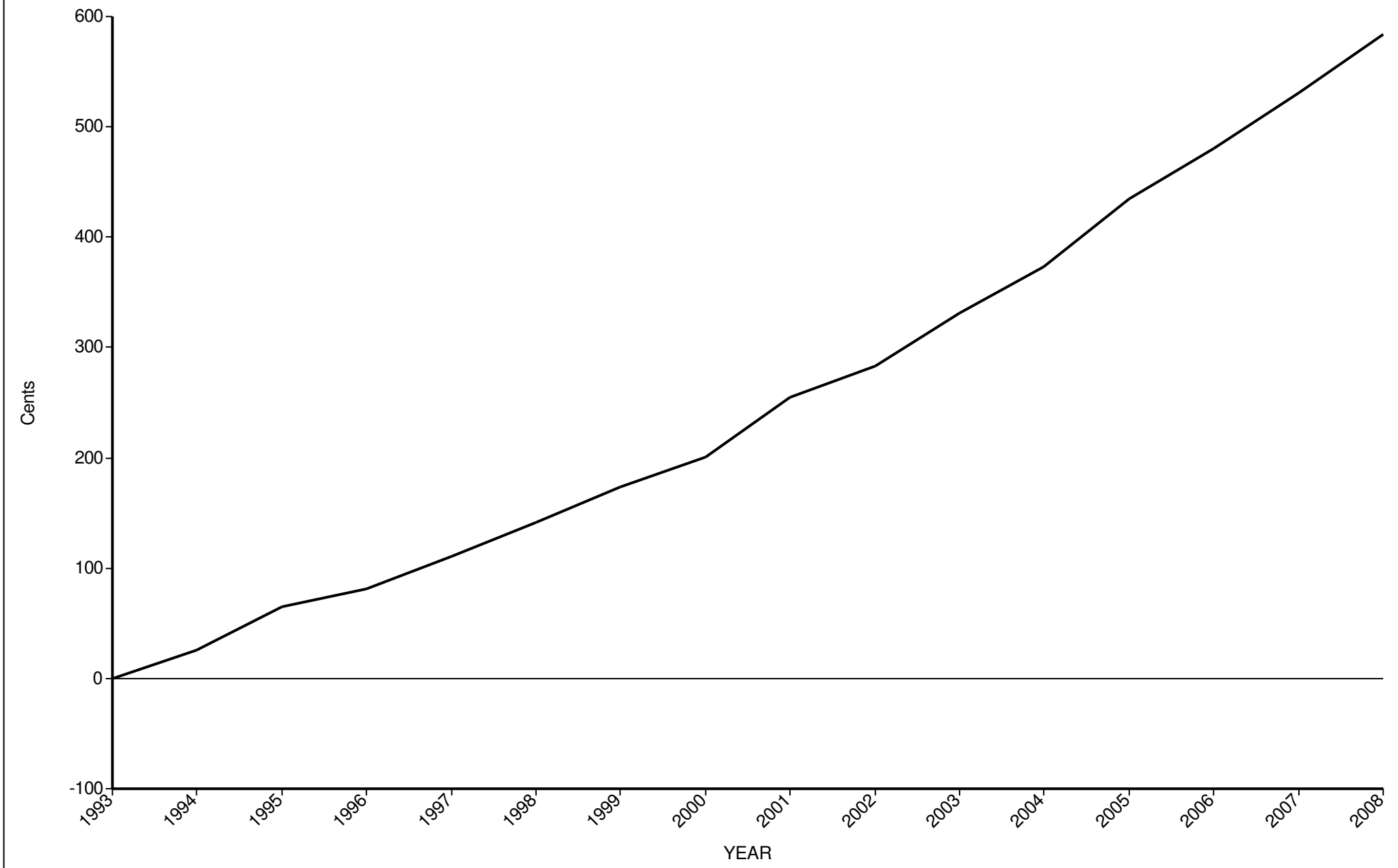
SIL Genetic Trends Graphs

for connected Flocks

GE Analysis #19124 5/8/2009

Analysis Flocks: 2,11,20,35 + 342 others

ACE Terminal Sire





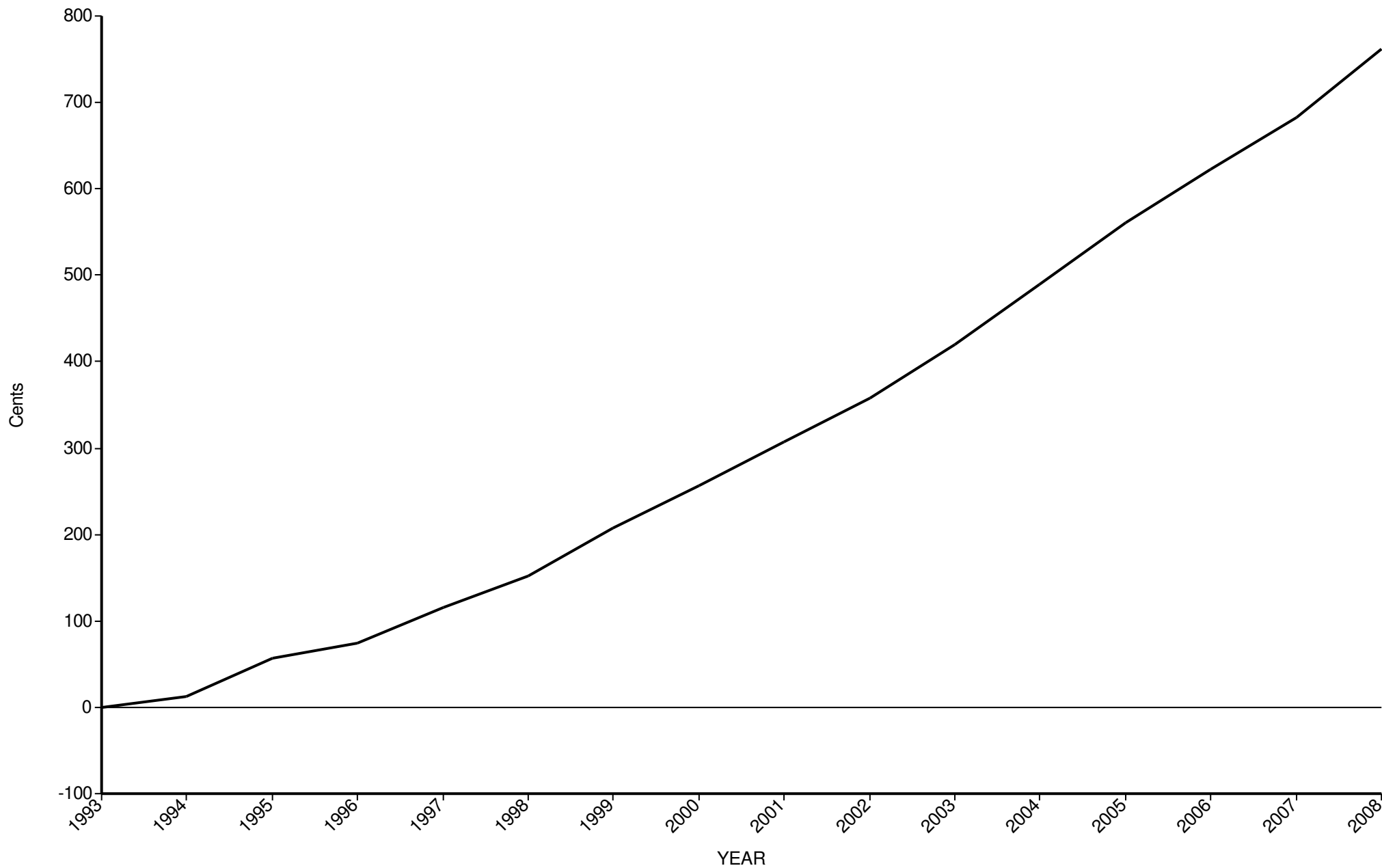
SIL Genetic Trends Graphs

for connected Flocks

GE Analysis #19124 5/8/2009

Analysis Flocks: 2,11,20,35 + 342 others

ACE Dual Purpose



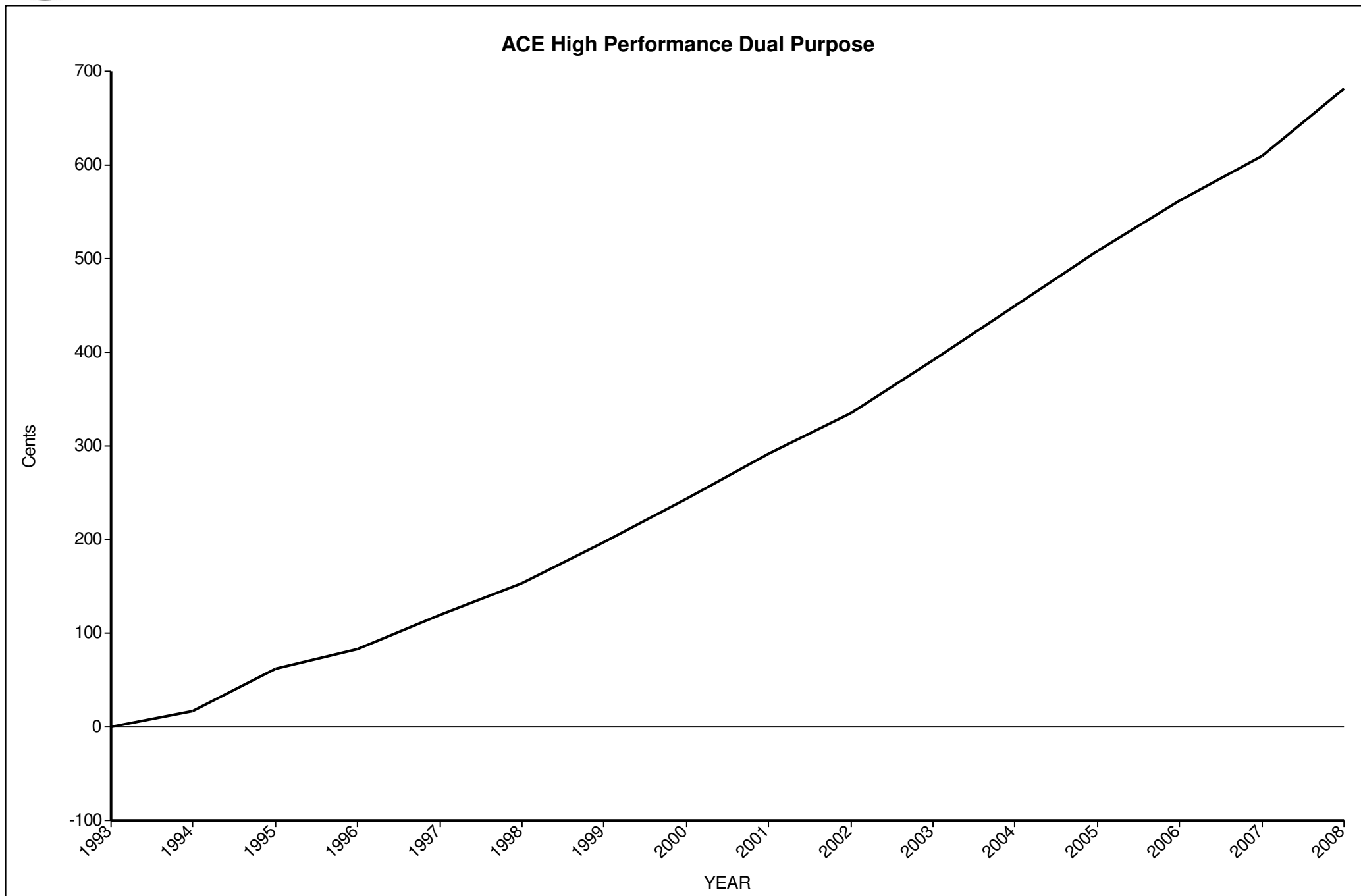


SIL Genetic Trends Graphs

for connected Flocks

GE Analysis #19124 5/8/2009

Analysis Flocks: 2,11,20,35 + 342 others





SIL Genetic Trends Graphs

for connected Flocks

GE Analysis #19124 5/8/2009

Analysis Flocks: 2,11,20,35 + 342 others

ACE DP Maternal

