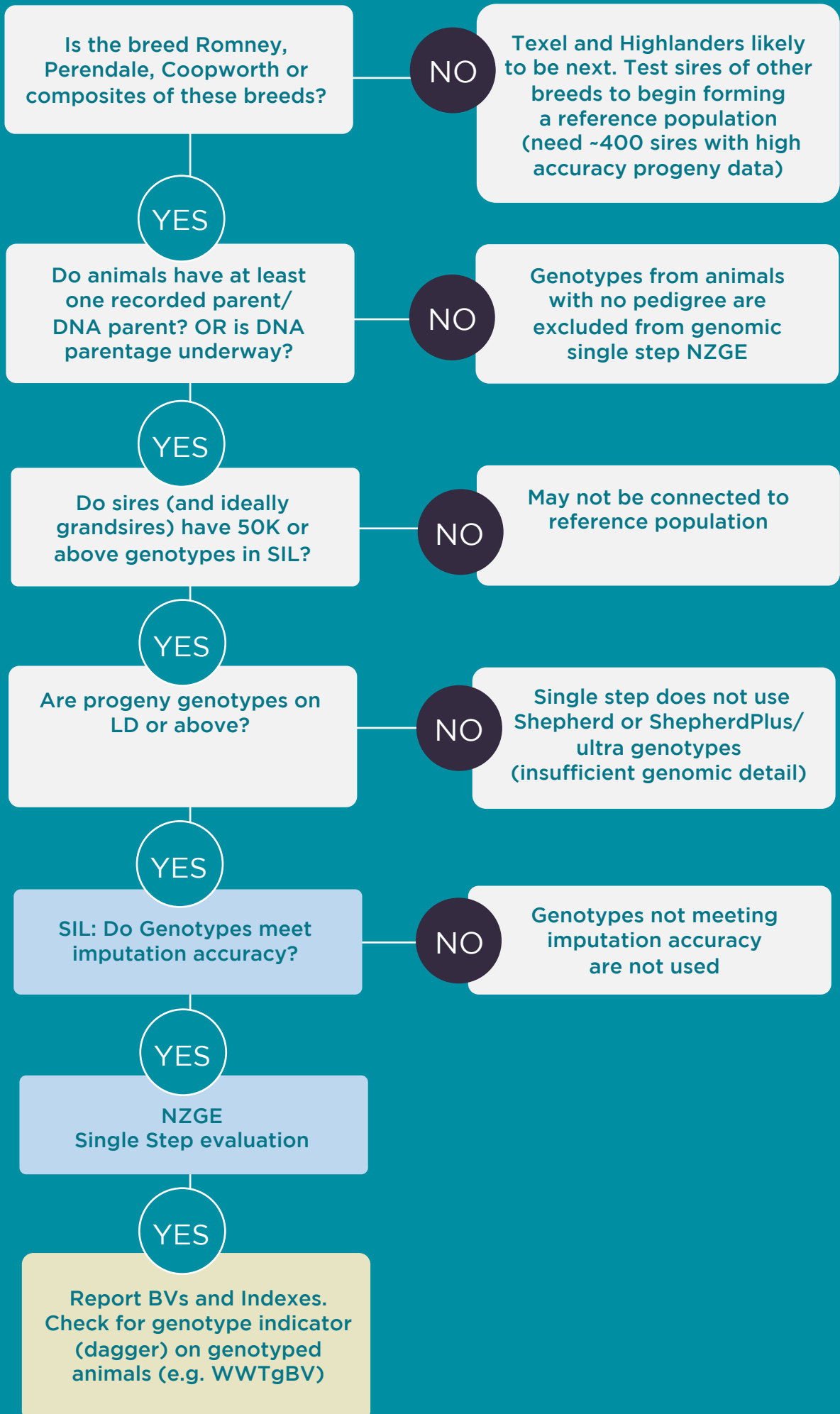


Genotyping Decision tree: Single Step

If I genotype my young animals will they be included in Single Step NZGE, producing enhanced breeding values?



Bureau/Breeder notes and checks:

- Run a Sire summary with Sire and Sire of Sire included, with ovineMD, ovineHD fields to check for genotypes.
- Check Selection Lists for young animals with genotypes in relevant birth year.
- **Note:** New genotypes need to pass lab call and imputation checks and be in SIL by 9am on the Friday prior to NZGE analysis to be included