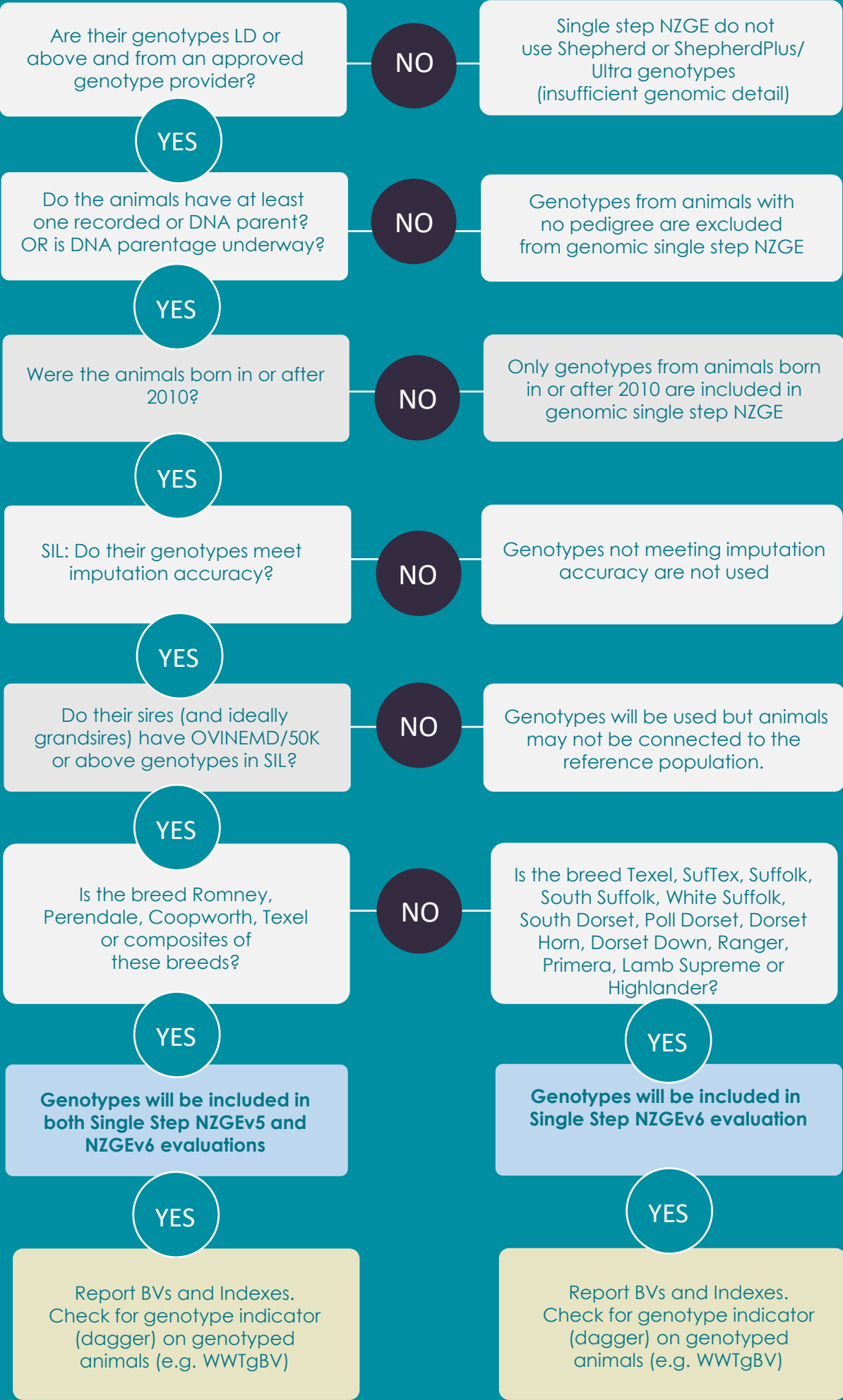


Genotyping Decision tree: Single Step NZGEv5 or NZGEv6 evaluation?

If I genotype my animals, will they be included in a Single Step NZGE, producing enhanced breeding values?



Bureau/Breeder notes and checks:

- Run a Sire summary with Sire, and Sire of Sire included, with OVINEMD, OVINEHD fields to check for genotypes.
- Check selection lists for young animals with genotypes in relevant birth year.
- **Note:** New genotypes need to pass lab call and imputation checks and be in SIL by 9am on the Friday prior to NZGE analysis to be included
- More detail is available from the SIL website: [https://www.sil.co.nz/technical/technical-notes/NZGE Update](https://www.sil.co.nz/technical/technical-notes/NZGE%20Update)